

# Moose (*Alces alces*)

## Predicted Suitable Habitat Modeling

**Distribution Status:** Resident Year Round

**State Rank:** [S4](#)

**Global Rank:** [G5](#)

### Modeling Overview

**Data Source Last Updated:** August 17, 2017

**Model Produced On:** August 18, 2017



### Deductive Modeling

#### **Modeling Process, Outputs, and Suggested Uses**

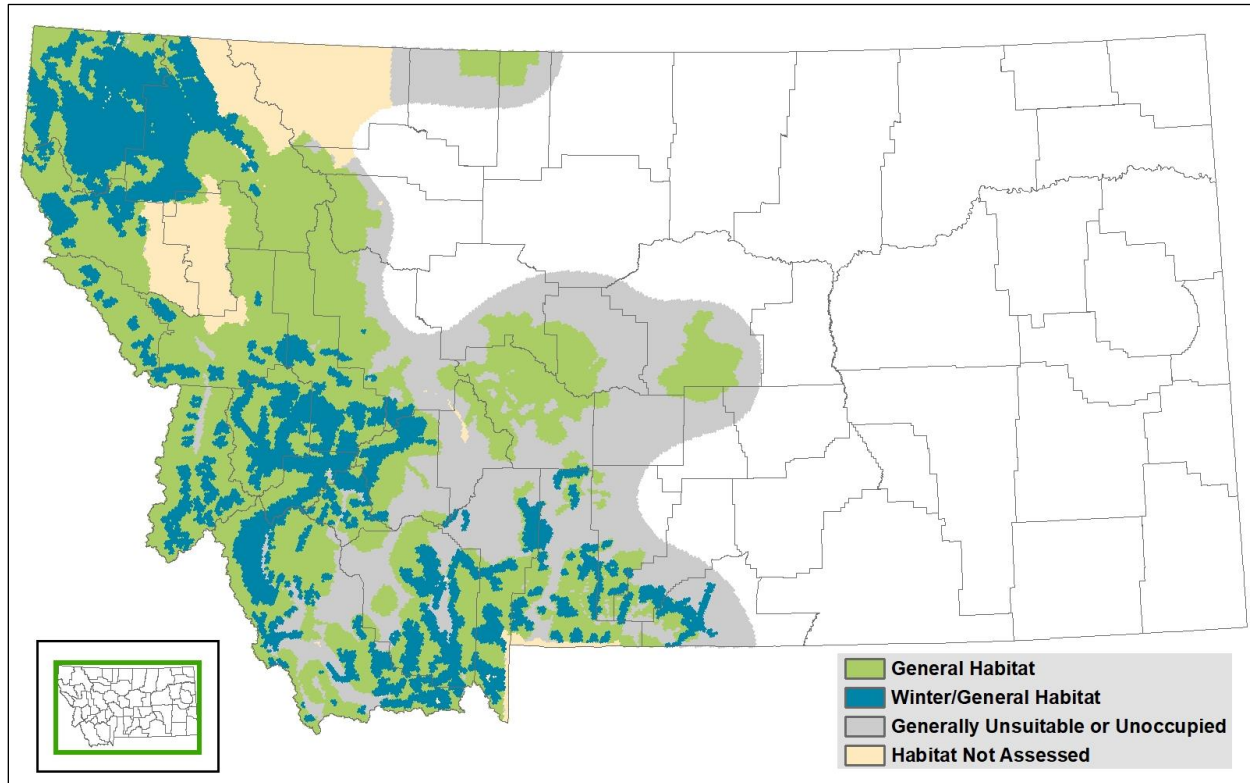
This is a simple rule-based model using general range and winter/general range mapping that the Montana Department of Fish, Wildlife, and Parks has compiled for Big Game species. See the Montana Distribution section under species accounts in the Montana Field Guide and Big Game species distribution, management unit, and hunting district information from the Montana Department of Fish, Wildlife, and Parks at: <http://data-mtfdwp.opendata.arcgis.com/> For compatibility with other predictive distribution models the Montana Natural Heritage Program produces, we have intersected the Big Game general range and winter/general range information with a uniform grid of hexagons that have been used for planning efforts across the western United States (e.g. Western Association of Fish and Wildlife Agencies - [Crucial Habitat Assessment Tool](#)). Each hexagon is one square mile in area and approximately one kilometer in length on each side. Any hexagon that had at least one quarter of its area intersecting with general or winter/general range was coded as such with a default to winter range if it was present. National parks and tribal reservations were not evaluated by Montana Fish, Wildlife, and Parks and these hexagons are classified as not assessed. Model outputs are not evaluated and we suggest they be used to generate potential lists of species that may occupy lands within each hexagon for the purposes of landscape-level planning. Model outputs should not be used in place of on-the-ground surveys for species and wildlife and land management agency biologists should be consulted about the value of using model output to guide habitat management decisions for regional planning efforts or local projects. See [Suggested Contacts for State and Federal Natural Resource Agencies](#) attached to this document.

**Suggested Citation:** Montana Natural Heritage Program. 2017. Moose (*Alces alces*) predicted suitable habitat models developed on August 18, 2017. Montana Natural Heritage Program, Helena, MT. 4 pp.

**Montana Field Guide Species Account:** <http://fieldguide.mt.gov/speciesDetail.aspx?elcode=AMALC03020>

## Deductive Model Map Output

Figure 1. Deductive habitat suitability model summarized into hexagons at a scale of 259 hectares per hexagon.




## Suggested Contacts for State and Federal Natural Resource Agencies

As required by Montana statute (MCA 90-15), the Montana Natural Heritage Program works with state, federal, tribal, nongovernmental organizations, and private partners to ensure that the latest animal and plant distribution and status information is incorporated into our databases so that it can be used to inform a variety of planning processes and management decisions. In addition to the information you receive from us, we encourage you to contact state, federal, and tribal resource management agencies in the area where your project is located. They may have additional data or management guidelines relevant to your efforts. In particular, we encourage you to contact the Montana Department of Fish, Wildlife, and Parks for the latest data and management information regarding hunted and high profile management species and to use the U.S. Fish and Wildlife Service’s Information Planning and Conservation (IPAC) website <http://ecos.fws.gov/ipac/> regarding U.S. Endangered Species Act listed Threatened, Endangered, or Candidate species.

For your convenience, we have compiled a list of relevant agency contacts and links below:

### Montana Fish, Wildlife, and Parks

Fish Species	Zachary Shattuck <a href="mailto:zshattuck@mt.gov">zshattuck@mt.gov</a> (406) 444-1231 or Lee Nelson <a href="mailto:leenelson@mt.gov">leenelson@mt.gov</a> (406) 444-2447
American Bison Black-footed Ferret Black-tailed Prairie Dog Bald Eagle Golden Eagle Common Loon Least Tern Piping Plover Whooping Crane	Lauri Hanauska-Brown <a href="mailto:LHanauska-Brown@mt.gov">LHanauska-Brown@mt.gov</a> (406) 444-5209
Grizzly Bear Greater Sage Grouse Trumpeter Swan Big Game Upland Game Birds Furbearers	John Vore <a href="mailto:jvore@mt.gov">jvore@mt.gov</a> (406) 444-5209
Managed Terrestrial Game and Nongame Animal Data	Adam Messer – MFWP Data Analyst (406) 444-0095, <a href="mailto:amesser@mt.gov">amesser@mt.gov</a>
Fisheries Data	Bill Daigle – MFWP Fish Data Manager (406) 444-3737, <a href="mailto:bdaigle@mt.gov">bdaigle@mt.gov</a>
Wildlife and Fisheries Scientific Collector’s Permits	<a href="http://fwp.mt.gov/doingBusiness/licenses/scientificWildlife/default.html">http://fwp.mt.gov/doingBusiness/licenses/scientificWildlife/default.html</a> Merissa Hayes for Wildlife (406) 444-7321 <a href="mailto:merhayes@mt.gov">merhayes@mt.gov</a> Beth Giddings for Fisheries (406) 444-7319 <a href="mailto:begiddings@mt.gov">begiddings@mt.gov</a>
Fish and Wildlife Recommendations for Subdivision Development	Renee Lemon <a href="mailto:RLemon@mt.gov">RLemon@mt.gov</a> (406) 444-3738 See also: <a href="http://fwp.mt.gov/fishAndWildlife/livingWithWildlife/buildingWithWildlife/subdivisionRecommendations/">http://fwp.mt.gov/fishAndWildlife/livingWithWildlife/buildingWithWildlife/subdivisionRecommendations/</a>
Regional Contacts 	<a href="#">Region 1</a> (Kalispell) (406) 752-5501 <a href="#">Region 2</a> (Missoula) (406) 542-5500 <a href="#">Region 3</a> (Bozeman) (406) 994-4042 <a href="#">Region 4</a> (Great Falls) (406) 454-5840 <a href="#">Region 5</a> (Billings) (406) 247-2940 <a href="#">Region 6</a> (Glasgow) (406) 228-3700 <a href="#">Region 7</a> (Miles City) (406) 234-0900

**U.S. Fish and Wildlife Service**

Information Planning and Conservation (IPAC) website: <http://ecos.fws.gov/ipac/>  
 Montana Ecological Services Field Office: <http://www.fws.gov/montanafieldoffice/> (406) 449-5225

**Bureau of Land Management**

Montana Field Office Contacts:	<table> <tr><td>Billings:</td><td>(406) 896-5013</td></tr> <tr><td>Butte:</td><td>(406) 533-7600</td></tr> <tr><td>Dillon:</td><td>(406) 683-8000</td></tr> <tr><td>Glasgow:</td><td>(406) 228-3750</td></tr> <tr><td>Havre:</td><td>(406) 262-2820</td></tr> <tr><td>Lewistown:</td><td>(406) 538-1900</td></tr> <tr><td>Malta:</td><td>(406) 654-5100</td></tr> <tr><td>Miles City:</td><td>(406) 233-2800</td></tr> <tr><td>Missoula:</td><td>(406) 329-3914</td></tr> </table>	Billings:	(406) 896-5013	Butte:	(406) 533-7600	Dillon:	(406) 683-8000	Glasgow:	(406) 228-3750	Havre:	(406) 262-2820	Lewistown:	(406) 538-1900	Malta:	(406) 654-5100	Miles City:	(406) 233-2800	Missoula:	(406) 329-3914
Billings:	(406) 896-5013																		
Butte:	(406) 533-7600																		
Dillon:	(406) 683-8000																		
Glasgow:	(406) 228-3750																		
Havre:	(406) 262-2820																		
Lewistown:	(406) 538-1900																		
Malta:	(406) 654-5100																		
Miles City:	(406) 233-2800																		
Missoula:	(406) 329-3914																		



**United States Forest Service**

<b>Regional Office – Missoula, Montana Contacts</b>			
Wildlife Program Leader: Wildlife Ecologist: Fish Program Leader: Fish Ecologist: TES Program: Interagency Grizzly Bear Coordinator: Regional Botanist:	Tammy Fletcher Cara Staab Scott Spaulding Cameron Thomas Lydia Allen Scott Jackson Steve Shelly	<a href="mailto:tammyfletcher@fs.fed.us">tammyfletcher@fs.fed.us</a> <a href="mailto:cstaab@fs.fed.us">cstaab@fs.fed.us</a> <a href="mailto:scottspaulding@fs.fed.us">scottspaulding@fs.fed.us</a> <a href="mailto:cathomas@fs.fed.us">cathomas@fs.fed.us</a> <a href="mailto:lrallen@fs.fed.us">lrallen@fs.fed.us</a> <a href="mailto:sjackson03@fs.fed.us">sjackson03@fs.fed.us</a> <a href="mailto:sshelly@fs.fed.us">sshelly@fs.fed.us</a>	(406) 329-3588 (406) 329-3677 (406) 329-3287 (406) 329-3087 (406) 329-3558 (406) 329-3664 (406) 329-3041