

How to Use Environmental Summary Task

Username =

Email =

*With your Username and account Email, you can reset your password at anytime.

1. Log in, select Environmental Summary task and zoom to area of interest
2. Filter out species that are conservation status of interest (SOC default)
3. Choose a spatial layer to summarize by or draw or upload a polygon
4. Download report or review results on screen
5. How to interpret report
6. Suggestions for addressing species and habitats
7. Additional Information



MONTANA
Natural Heritage
Program

1515 East 6th Avenue
Helena, MT 59620
(406) 444-5363

mtnhp.org



Latitude Longitude
45.69648 -112.86861
45.82961 -112.86051

Summarized by:
Charcoal Creek-Big Hole River
(100200041104 - 6th Code Watershed)



Suggested Citation

Montana Natural Heritage Program. Environmental Summary Report.
for Latitude 45.69648 to 45.82961 and Longitude -112.86861 to -112.86051. Retrieved on 5/11/2020.

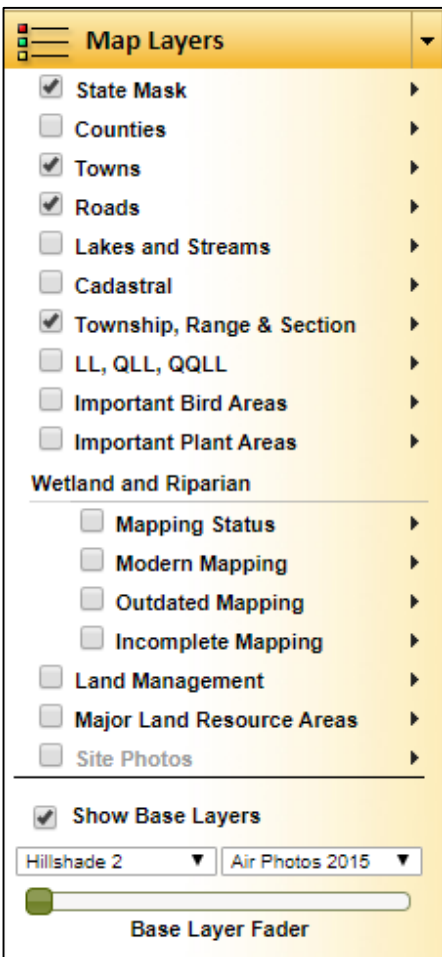
The Montana Natural Heritage Program is a program of the Montana State Library's Natural Resource Information System. It is operated as a special program under the Office of the Vice President for Research and Creative Scholarship at the University of Montana, Missoula. The Montana Natural Heritage Program is part of NatureServe - a network of over 80 similar programs in states, provinces and nations throughout the Western Hemisphere, working to provide comprehensive status and distribution information for species and ecosystems.



Step 1:

Zoom to Area of Interest

Hint: Under the **Map Layers tool** near the bottom left, turn on base maps such as air photos or topographic map imagery and overlay maps such as Township, Range, & Section lines, roads, or streams that will allow you to visualize the area of interest.



Map Layers

- State Mask
- Counties
- Towns
- Roads
- Lakes and Streams
- Cadastral
- Township, Range & Section
- LL, QLL, QLLL
- Important Bird Areas
- Important Plant Areas

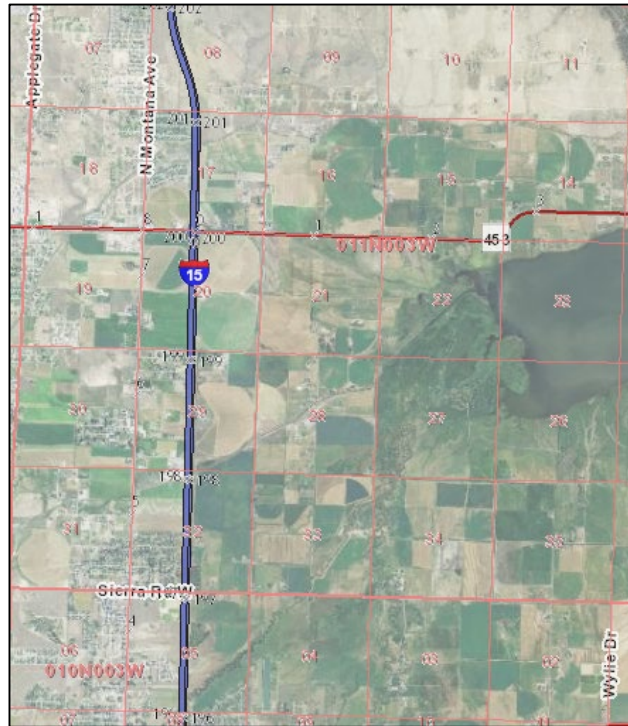
Wetland and Riparian

- Mapping Status
- Modern Mapping
- Outdated Mapping
- Incomplete Mapping
- Land Management
- Major Land Resource Areas
- Site Photos

Show Base Layers

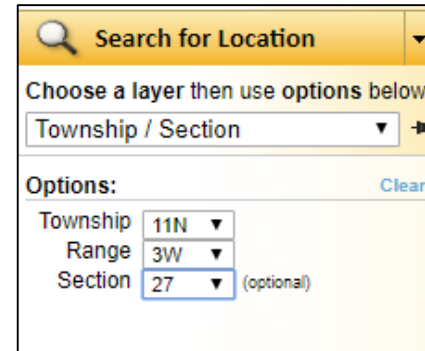
Hillshade 2 | Air Photos 2015

Base Layer Fader



Option 1:

Use **Search for Location** tool at bottom left to select a spatial data layer to search on and then select from a pick list or enter the value of interest. Searchable layers include Public Land Survey Section, group of Sections, named feature, water body, quadrangle, or map coordinates



Search for Location

Choose a layer then use options below

Township / Section

Options: Clear


Township: 11N

Range: 3W

Section: 27 (optional)

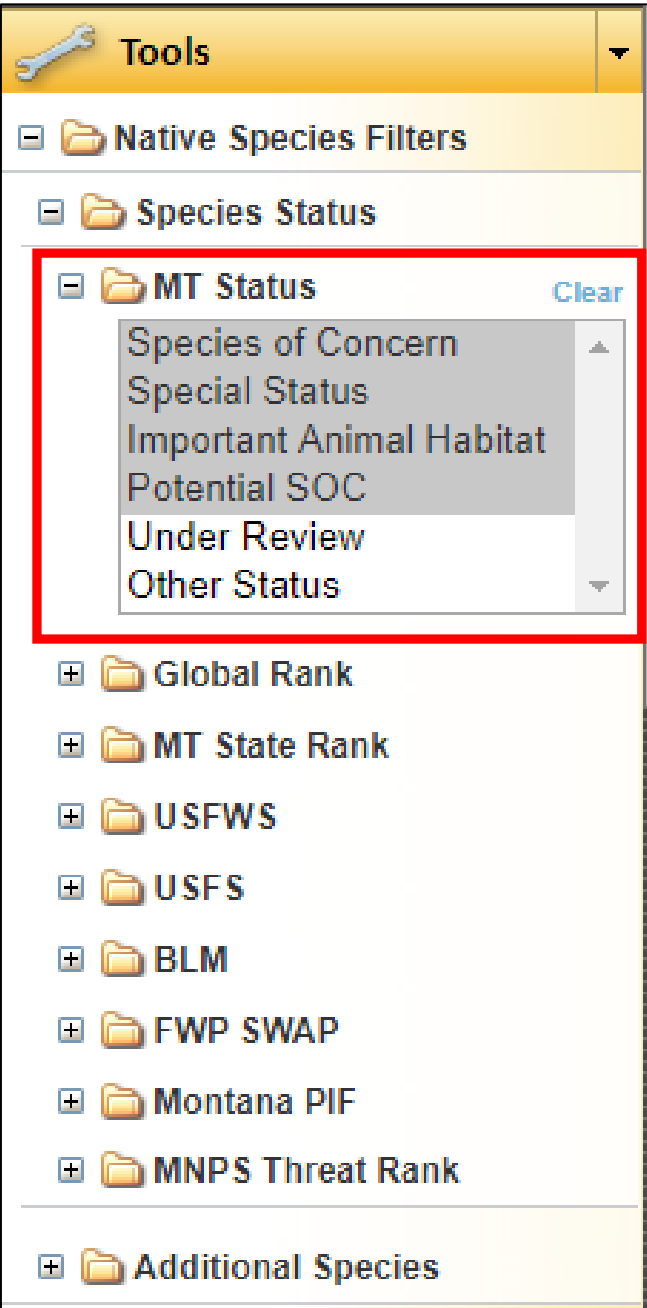


Option 2:

Click on the **magnifying glass**  on upper dark green menu bar above the map and then draw a box around the area of interest

Option 3:

If you have a **mouse wheel** hold the cursor over the area of interest and role the wheel forward or backward to zoom in or out



Step 2:

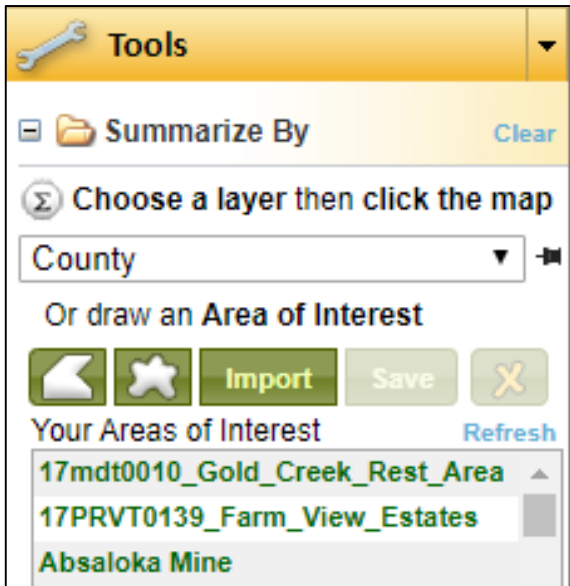
Filter out Species that are Conservation Status of Interest



Recommendation

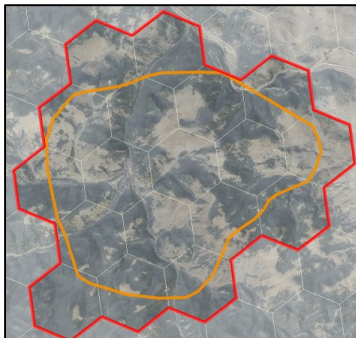
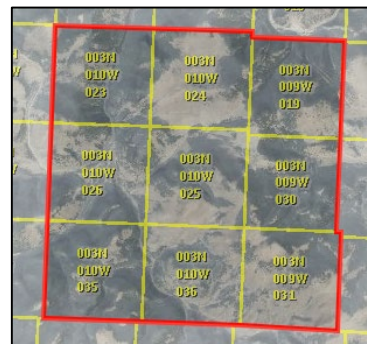
For most standard environmental reviews in Montana, we recommend using the **Native Species Filters** on the left to filter out Montana Status = Species of Concern, Special Status, Important Animal Habitat, and Potential SOC (this is only for plants) as shown in the image to the left. However, you could filter out species that are of a particular status for a variety of federal and state agencies in order to conduct environmental reviews that need to meet specific agency or other requirements. You can also add one or more species that do not have an agency status using the **Additional Species** filter.

Step 3:

Choose a spatial layer to summarize by or draw or upload a polygon



Choose one of the spatial layers from the **Summarize By** menu on the middle left, then click on the map to create summary information for an exact polygon boundary. Alternatively, summarize by a custom area of interest by using the tools to digitize vertices , free hand draw , or import polygons from zipped Shape, KMZ, or KML files. Save a polygon to **Your Areas of Interest** for future use. Once you draw, import, or upload a previously saved polygon, you will see a set of hexagons (each 1 square mile in area) that the data summaries in the report will be based on (i.e. summaries are for red hexagon boundary, not orange drawn/imported boundary). We recommend using a minimum of a one mile buffer of smaller project areas in order to pick up species that might be in the surrounding area. For example, if a cell phone tower was being considered within a particular public land survey section, buffer that section to include all of the surrounding sections.



Step 4:

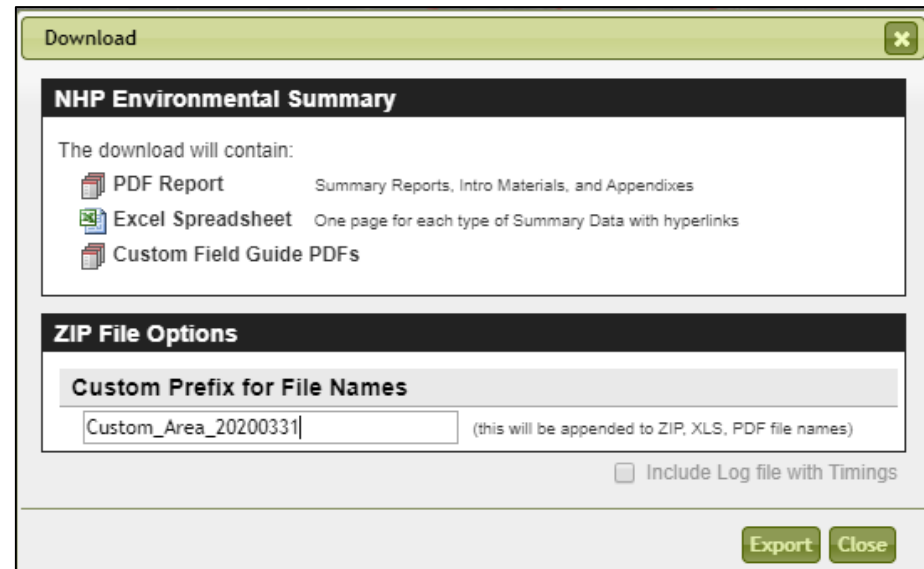
Download report or review results on screen

Download Report

Under the **Charts and Data** bar at the bottom of the map screen, you will see a **Download Report** link which will take you to a screen showing you what files are included in the download and giving you the opportunity to enter a custom prefix for those files.

Review Results on Screen

Under the **Charts and Data** bar at the bottom of the map screen, you can open up folders to review the results for various portions of the Environmental Summary Report online.



Download

NHP Environmental Summary

The download will contain:

- PDF Report Summary Reports, Intro Materials, and Appendixes
- Excel Spreadsheet One page for each type of Summary Data with hyperlinks
- Custom Field Guide PDFs

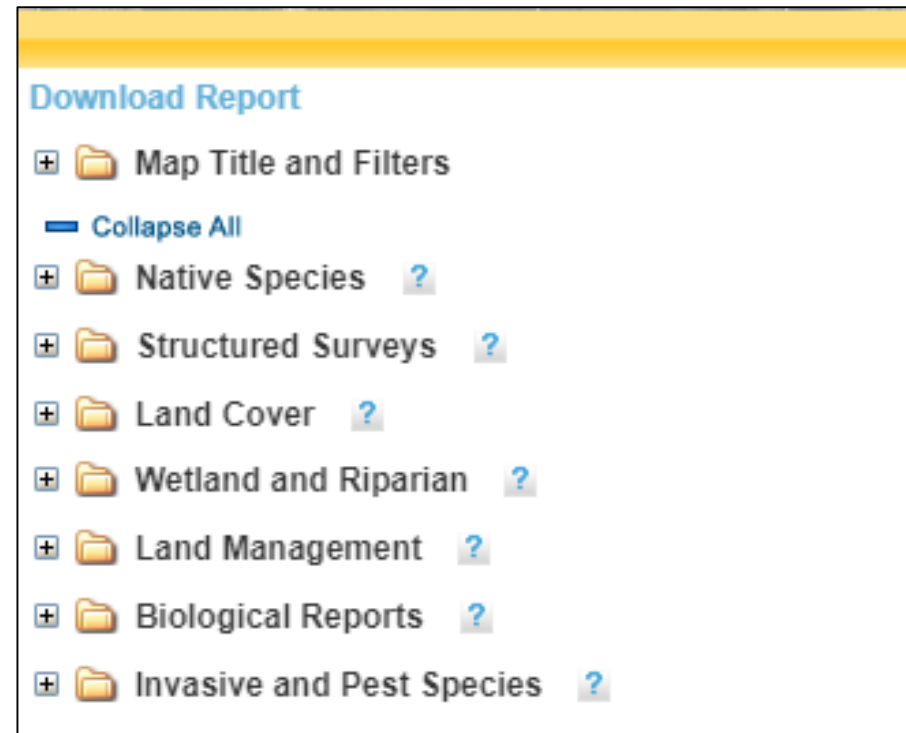
ZIP File Options

Custom Prefix for File Names

Custom_Area_20200331 (this will be appended to ZIP, XLS, PDF file names)

Include Log file with Timings

Export Close



Download Report

- + Map Title and Filters
- Collapse All
- + Native Species ?
- + Structured Surveys ?
- + Land Cover ?
- + Wetland and Riparian ?
- + Land Management ?
- + Biological Reports ?
- + Invasive and Pest Species ?

Step 5: How to Interpret Report

Carefully read the explanatory materials in the introduction and appendices of the downloadable report for interpretation of results. Pay special attention to Data Use Terms and Conditions, bolded report limitations, Suggested Contacts for Natural Resource Agencies, and links to Additional Information Resources. We recommend you read this material at least once a year.

Table of Contents

- Species Report
- - Other Observed
- - Other Potential Species
- Structured Surveys
- Land Cover
- Wetland and Riparian
- Land Management
- Biological Reports
- Invasive and Pest Species
- Introduction to Montana Natural Heritage Program
- **Data Use Terms and Conditions**
- **Suggested Contacts for Natural Resource Agencies**
- Introduction to Native Species
- Introduction to Land Cover
- Introduction to Wetland and Riparian
- Introduction to Land Management
- Introduction to Invasive and Pest Species
- Additional Information Resources

Still Have Questions?

Contact

Bryce Maxell

(406) 444-3989

bmaxell@mt.gov

Step 6:

Suggestions for Addressing Documented and Potential Species

1. Use the number of species occurrences (# SO), number of observations (# Obs), range, model output, and percent of common and occasional habitat in the report area to determine the known occupancy or likelihood of occupancy of individual species and need for mitigation actions to protect individual species from project activities.
 - a. Species of Concern that have Species Occurrence polygons meeting the listed delineation criteria should be considered present and the user is encouraged to address why mitigation activities are, or are not, required based on the biology of the species.
 - b. Other observed species and other potential species should be examined for the percent of common or occasional habitat in the report area and, where available, predicted habitat suitability model output. Species with a large amount of contiguous common or occasional habitat and the majority of the area has moderate or optimal habitat suitability should be addressed as to why mitigation activities are, or are not, required based on the biology of the species.
 - c. Use structured survey information to determine if surveys are needed.
 - d. Mitigation measures may be necessary for documented or potential invasive species.

Suggestions for Addressing Wetland and Terrestrial Habitats

2. Wetland and riparian habitats support a disproportionate amount of biodiversity. Project activities affecting wetland and riparian habitats should therefore be addressed as to why mitigation activities are, or are not, required.
3. Natural ecological systems in the land cover layer for the report area that are regionally uncommon should be addressed as to why mitigation activities are, or are not, required.



Step 7: Other Information

If, after your initial review of the Environmental Summary report, you find that you need additional information you can start with the following:

- Use Resources in Appendices of Environmental Summary Report
- Contact the appropriate agencies with additional questions early in the process.
- Use the **Additional Species filter** to include species of local interest that do not meet the selected Species Status filters such as species that received comments in initial drafts of Environmental Reviews. If the additional species selected are within the range polygons delineated for species as shown on the Montana Field Guide or if there is observation or species occurrence data present, the additional species will be included in the Environmental Summary report.

Other Map Viewer Tasks

<http://mtnhp.org/mapviewer>



Montana Field Guide

<http://fieldguide.mt.gov>

