

# Mountain Whitefish (*Prosopium williamsoni*)

## Predicted Suitable Habitat Modeling

**Distribution Status:** Resident Year Round

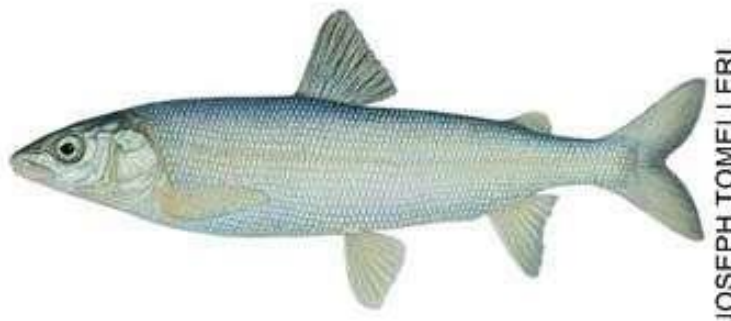
**State Rank:** [S5](#)

**Global Rank:** [G5](#)

### Modeling Overview

**Data Source Last Updated:** August 23, 2018

**Model Produced On:** July 11, 2019



### Deductive Modeling

#### **Modeling Process, Outputs, and Suggested Uses**

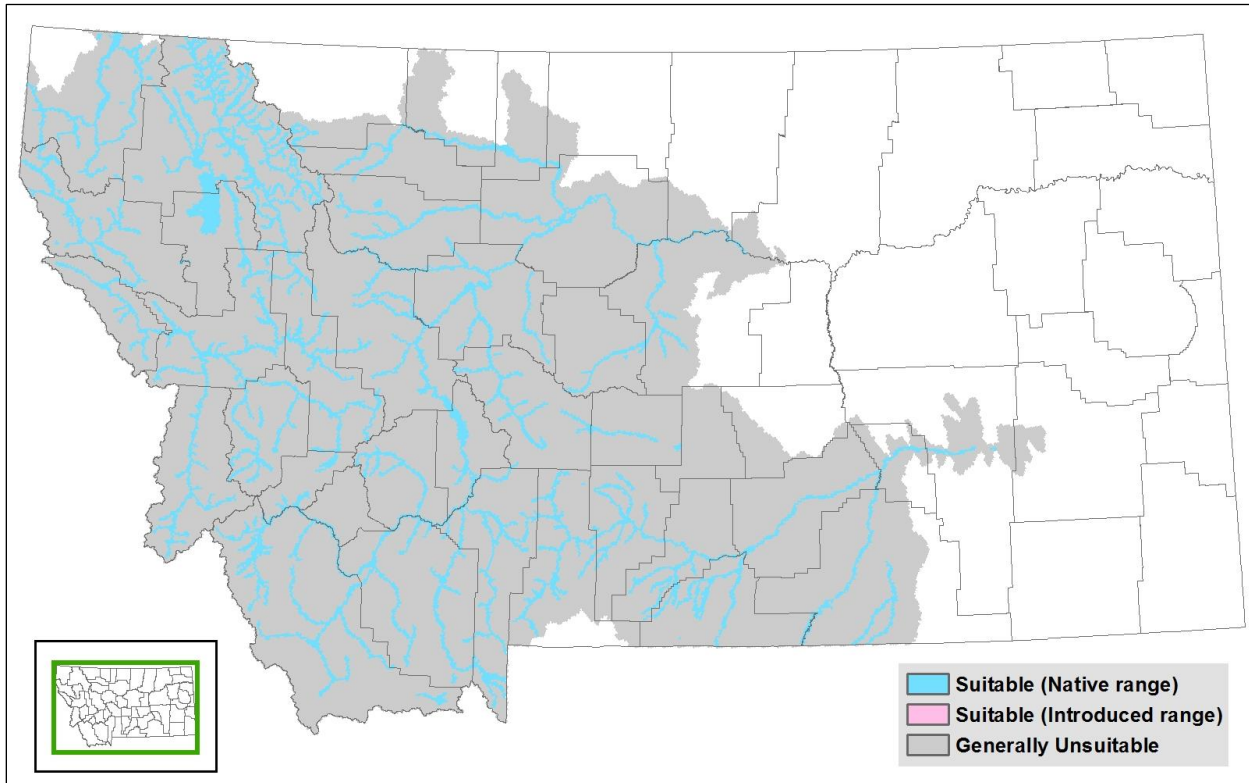
This is a simple rule-based model using stream reaches and standing waterbodies where the species presence has been confirmed through direct capture or where they are believed to be present based on the professional judgement of a fisheries biologist due to confirmed presence in adjacent areas. See Montana fish distribution, survey, stocking, and genetic testing information from the Montana Department of Fish, Wildlife, and Parks at: <http://gis-mtftp.opendata.arcgis.com/> For compatibility with other predictive distribution models the Montana Natural Heritage Program produces, we have intersected this fish presence information with a uniform grid of hexagons that have been used for planning efforts across the western United States (e.g. Western Association of Fish and Wildlife Agencies - [Crucial Habitat Assessment Tool](#)). Each hexagon is one square mile in area and approximately one kilometer in length on each side. Any hexagon that intersected a waterbody evaluated as having a species present was classified as suitable habitat; native or introduced. Model outputs are not evaluated and we suggest they be used to generate potential lists of species that may occupy water bodies present within each hexagon for the purposes of landscape-level planning. Model outputs should not be used in place of on-the-ground surveys for species, and wildlife and land management agency biologists should be consulted about the value of using model output to guide habitat management decisions for regional planning efforts or local projects. See [Suggested Contacts for Natural Resource Agencies](#) attached to this document.

**Suggested Citation:** Montana Natural Heritage Program. 2019. Mountain Whitefish (*Prosopium williamsoni*) predicted suitable habitat models developed on July 11, 2019. Montana Natural Heritage Program, Helena, MT. 4 pp.

**Montana Field Guide Species Account:** <http://fieldguide.mt.gov/speciesDetail.aspx?elcode=AFCHA03060>

## Deductive Model Map Output

Figure 1. Deductive habitat suitability model summarized into hexagons at a scale of 259 hectares per hexagon.



## Suggested Contacts for Natural Resource Agencies

As required by Montana statute (MCA 90-15), the Montana Natural Heritage Program works with state, federal, tribal, nongovernmental organizations, and private partners to ensure that the latest animal and plant distribution and status information is incorporated into our databases so that it can be used to inform a variety of planning processes and management decisions. In addition to the information you receive from us, we encourage you to contact state, federal, and tribal resource management agencies in the area where your project is located. They may have additional data or management guidelines relevant to your efforts. In particular, we encourage you to contact the Montana Department of Fish, Wildlife, and Parks for the latest data and management information regarding hunted and high profile management species and to use the U.S. Fish and Wildlife Service’s Information Planning and Conservation (IPAC) website <http://ecos.fws.gov/ipac/> regarding U.S. Endangered Species Act listed Threatened, Endangered, or Candidate species.

For your convenience, we have compiled a list of relevant agency contacts and links below:

### Montana Fish, Wildlife, and Parks

Fish Species	Zachary Shattuck <a href="mailto:zshattuck@mt.gov">zshattuck@mt.gov</a> (406) 444-1231 or Lee Nelson <a href="mailto:leenelson@mt.gov">leenelson@mt.gov</a> (406) 444-2447
American Bison Black-footed Ferret Black-tailed Prairie Dog Bald Eagle Golden Eagle Common Loon Least Tern Piping Plover Whooping Crane	Lauri Hanauska-Brown <a href="mailto:LHanauska-Brown@mt.gov">LHanauska-Brown@mt.gov</a> (406) 444-5209
Grizzly Bear Greater Sage Grouse Trumpeter Swan Big Game Upland Game Birds Furbearers	John Vore <a href="mailto:jvore@mt.gov">jvore@mt.gov</a> (406) 444-5209
Managed Terrestrial Game and Nongame Animal Data	Smith Wells – MFWP Data Analyst <a href="mailto:smith.wells@mt.gov">smith.wells@mt.gov</a> (406) 444-3759
Fisheries Data	Adam Petersen – MFWP Fish Data Manager <a href="mailto:apetersen@mt.gov">apetersen@mt.gov</a> (406) 444-1275
Wildlife and Fisheries Scientific Collector’s Permits	<a href="http://fwp.mt.gov/doingBusiness/licenses/scientificWildlife/">http://fwp.mt.gov/doingBusiness/licenses/scientificWildlife/</a> Karen Speeg for Wildlife <a href="mailto:kspeeg@mt.gov">kspeeg@mt.gov</a> (406) 444-2612 Kim Wedde for Fisheries <a href="mailto:kim.wedde@mt.gov">kim.wedde@mt.gov</a> (406) 444-5594
Fish and Wildlife Recommendations for Subdivision Development	Renee Lemon <a href="mailto:RLemon@mt.gov">RLemon@mt.gov</a> (406) 444-3738 See also: <a href="http://fwp.mt.gov/fishAndWildlife/livingWithWildlife/buildingWithWildlife/subdivisionRecommendations/">http://fwp.mt.gov/fishAndWildlife/livingWithWildlife/buildingWithWildlife/subdivisionRecommendations/</a>
Regional Contacts 	<a href="#">Region 1</a> (Kalispell) (406) 752-5501 <a href="#">Region 2</a> (Missoula) (406) 542-5500 <a href="#">Region 3</a> (Bozeman) (406) 994-4042 <a href="#">Region 4</a> (Great Falls) (406) 454-5840 <a href="#">Region 5</a> (Billings) (406) 247-2940 <a href="#">Region 6</a> (Glasgow) (406) 228-3700 <a href="#">Region 7</a> (Miles City) (406) 234-0900

**U.S. Fish and Wildlife Service**

Information Planning and Conservation (IPAC) website: <http://ecos.fws.gov/ipac/>

Montana Ecological Services Field Office: <http://www.fws.gov/montanafieldoffice/> (406) 449-5225

**Bureau of Land Management**

<p>Montana Field Office Contacts:</p> 	<p>Billings: (406) 896-5013                  Butte: (406) 533-7600                  Dillon: (406) 683-8000                  Glasgow: (406) 228-3750                  Havre: (406) 262-2820                  Lewistown: (406) 538-1900                  Malta: (406) 654-5100                  Miles City: (406) 233-2800                  Missoula: (406) 329-3914</p>
---	--

**United States Forest Service**



**Regional Office – Missoula, Montana Contacts**

Wildlife Program Leader:	Tammy Fletcher	<a href="mailto:tammyfletcher@fs.fed.us">tammyfletcher@fs.fed.us</a>	(406) 329-3588
Wildlife Ecologist:	Cara Staab	<a href="mailto:cstaab@fs.fed.us">cstaab@fs.fed.us</a>	(406) 329-3677
Fish Program Leader:	Scott Spaulding	<a href="mailto:scottspaulding@fs.fed.us">scottspaulding@fs.fed.us</a>	(406) 329-3287
Fish Ecologist:	Cameron Thomas	<a href="mailto:cathomas@fs.fed.us">cathomas@fs.fed.us</a>	(406) 329-3087
TES Program:	Lydia Allen	<a href="mailto:lrallen@fs.fed.us">lrallen@fs.fed.us</a>	(406) 329-3558
Interagency Grizzly Bear Coordinator:	Scott Jackson	<a href="mailto:sjackson03@fs.fed.us">sjackson03@fs.fed.us</a>	(406) 329-3664
Regional Botanist:	Steve Shelly	<a href="mailto:sshelly@fs.fed.us">sshelly@fs.fed.us</a>	(406) 329-3041

**Tribal Nations**

	<p><a href="#">Assiniboine &amp; Gros Ventre Tribes – Fort Belknap Reservation</a>  <a href="#">Assiniboine &amp; Sioux Tribes – Fort Peck Reservation</a>  <a href="#">Blackfoot Tribe - Blackfoot Reservation</a>  <a href="#">Chippewa Creek Tribe - Rocky Boy's Reservation</a>  <a href="#">Crow Tribe – Crow Reservation</a>  <a href="#">Little Shell Chippewa Tribe</a>  <a href="#">Northern Cheyenne Tribe – Northern Cheyenne Reservation</a>  <a href="#">Salish &amp; Kootenai Tribes - Flathead Reservation</a></p>
---	---